

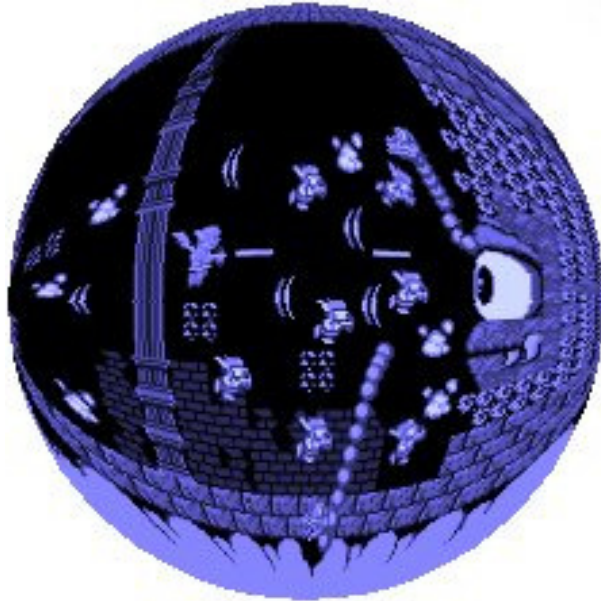
Parthena's CASTLE



Instructions handbook
MFGS(c)

Back to the chaos...

1000 years ago there was a big battle between the heroic angel Pit, the loyal guardian of Parthena, the goddess of Light, and Medusa, the goddess of Darkness.



This legendary battle took place in Sky Palace and was won by Pit who managed to restore peace in Angel Land. The victory of Pit was the end of a realm of chaos caused by Medusa, who had conquered the Sky Palace because of her envy for Parthena's beauty.

But now Medusa, found a way to invert the time of Angel Land and sent it back to 1000 years ago, when she was the evil ruler of the realm.



One day, as a storm approached Angel Land, a strong wind started talking to people:

*“I have the abilities to change the fate.
Everything will return like it was at that time,
but it will be evil who will win at last”*

It was the voice of Medusa herself!

After a while, Angel Land was surrounded by a mist, Pit found himself in the Underworld, and monsters were everywhere! Angel Land was victim of the Time Warp, how Medusa did this is a mystery which only you will be able to solve...



Now we have to fight again!

However Medusa's spell did not work perfectly and this caused the warp to old Angel Land to be a little twisted: for instance, the Gatekeepers of the Worlds will come out of eggs...

The only way for Pit to go back to the present is by collecting the 3 Seals which have been scattered in Time.

The one who collects a Seal, will be able to travel the Time 333 years forward.

Four days to find Medusa

You control Pit and you have to defeat enemies and advance through Angel Land.

The adventure takes place in 4 days.

The first day you will travel in the Underworld.

The second through the countryside of Angel Land.

The third day you will climb the clouds.

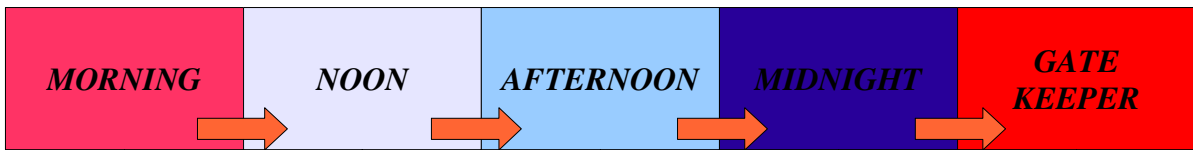
The fourth day you will go to the Fortress of Time.

Here you will have to collect the 3 Seals.

Then you will return to present and will fight the true Medusa.

Levels

Each level is a day and is subdivided into morning, noon, afternoon and midnight. At midnight you will meet the boss who is the Gatekeeper of the level.

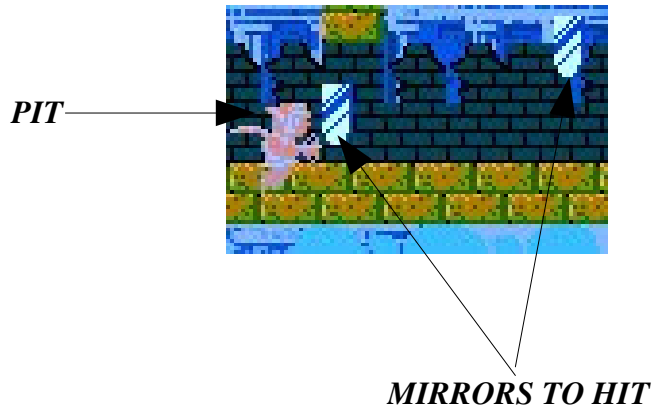


The dream

After you defeat a Gatekeeper at midnight, you will fall asleep because of the tiredness and efforts you made all the day. Before falling asleep, you will have the vision of Parthena and she will make you dream the Battle against Medusa. This is a vision that Parthena gives you to encourage you and make you confident that at last you will win.



In this phase, you will not be able to look at Medusa, otherwise she will petrify you. The only way to fight Medusa is by hitting the mirrors that will arrive from right. Your arrow will bounce back and will hit Medusa.



Note: it is only a dream, but if you die it will be for real!

Controls

Left/right: move Pit

Up: makes Pit jump or plane (if pressed while in mid-air)

Down: makes Pit jump forward

Fire: makes Pit use his weapons

while having Wings of Fortune:

Up: gives Pit the possibility of flying upward.

during Dream phase:

Use Up/Down to fly up or down

Menu

You can access the menu at any time in the game.

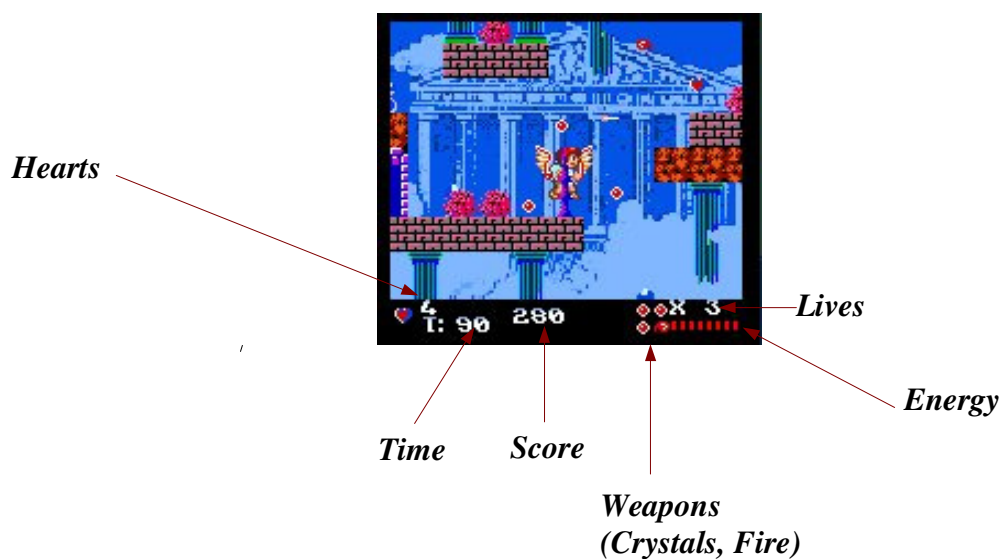
Here you will be able to:

-Switch music on/off

- Switch autofire on/off: autofire is an option that makes Pit continuously throw his weapons.
- Read the story
- Read Help
- Having more informations about the game

Status bar

The status bar at the bottom of the screen gives you informations about score, energy, number of hammers collected, hearts, and weapons.



During the dream phase and during the fights against Gatekeeper there will be a *boss meter*.

In the chambers with petrified ghost there will be also the hammers meter.

Arrows

The arrow is your main weapon.



You will find power-ups which increase the efficiency of arrows. The power-up will transform the arrow into the next type:

-White arrow: the basic one



-Green arrow: arrow of medium power



-Red arrow: the strongest arrow

If you get hit by an enemy, you will lose the current power-up and your arrow will regress to the previous weaker one.

Hearts and shops

When a monster is defeated, it will release hearts that you can collect to buy items in the shops. You can find hearts in superblocs too.



There will be shops along the way:



Here you can buy items or weapons. If you have enough hearts you can get an item by simply jumping over it.

Superblocks

There are superblocks scattered all over the levels.



If you hit them with the arrow, you will receive a gift hidden inside.

Be careful... sometime Reapette is inside!!!



Items and secondary weapons

Items that can be used instantaneously and can be found in superblocs:

-Wings of Fortune:



*will give you the ability to fly for a certain period,
push "Up" to fly upwards.*

-Harp:



will turn all monsters into hammers.

Item that you can buy in shops:

-Magic Fire:



will enhance your arrow by adding a flame to it

-Magic Crystal:



you can buy up to 3 magic crystals which will protect you from enemies.

-Chalice of life:



will give you a little of energy

-Water life bottle:



will give you a lot of more energy.

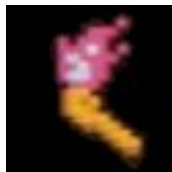
Item hidden inside super blocks:

-Crystal accessory:



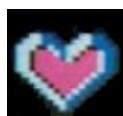
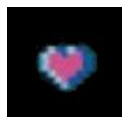
this will activate the magic crystal you have previously bought in shops. Note: if you get hit, you will lose one crystal accessory. You can activate up to 3 crystal accessories, depending on how many of them you have bought in shops.

-Torch:



it will refill the time limit to 99. The torch is not present during the Dream phase.

-Power up and hearts:



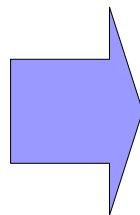
Petrified ghosts

In some chambers, you will find a petrified ghost. There are 3 petrified ghosts which will appear many times in different part of the game.

Before Medusa took over the Sky Palace, these guys were part of the beautiful realm of Parthena, but then they were taken over by an evil spirit. However after the Time Warp, their original spirit became stronger and they started disobeying orders of Medusa. As a result they were petrified and thrown out of Sky Palace by Medusa.

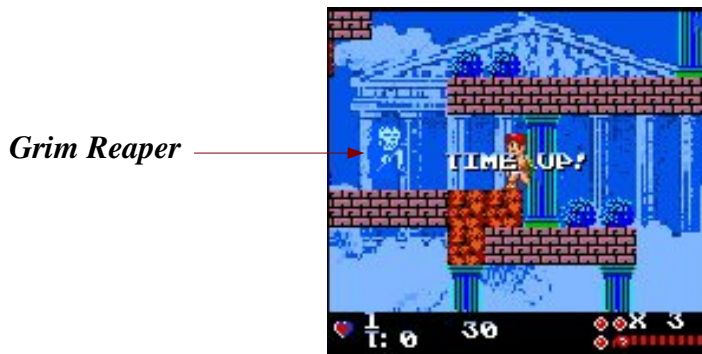


If you hit them a certain number of times with the hammer, you will free their original soul and you will receive a life as a reward.



Watch the watch

There is a time limit to complete each level. Once the time counter reaches 0, Grim Reaper will appear. You cannot escape her, and if you touch her, you will lose a life.



So remember to collect torches during the adventure to refill your time counter. There is no time limit during the Dream phase.

The Seals of time



The 3 Seals are not made of matter but of Time. You will collect them in the Fortress of Time. These Treasures belongs to Parthena.

The 3 Seals are the Mirror, The Light Arrow and the Wings. Once Pit have the 3 Seals, he will be able to enter the Sky Palace and fight the true Medusa.

GOOD LUCK